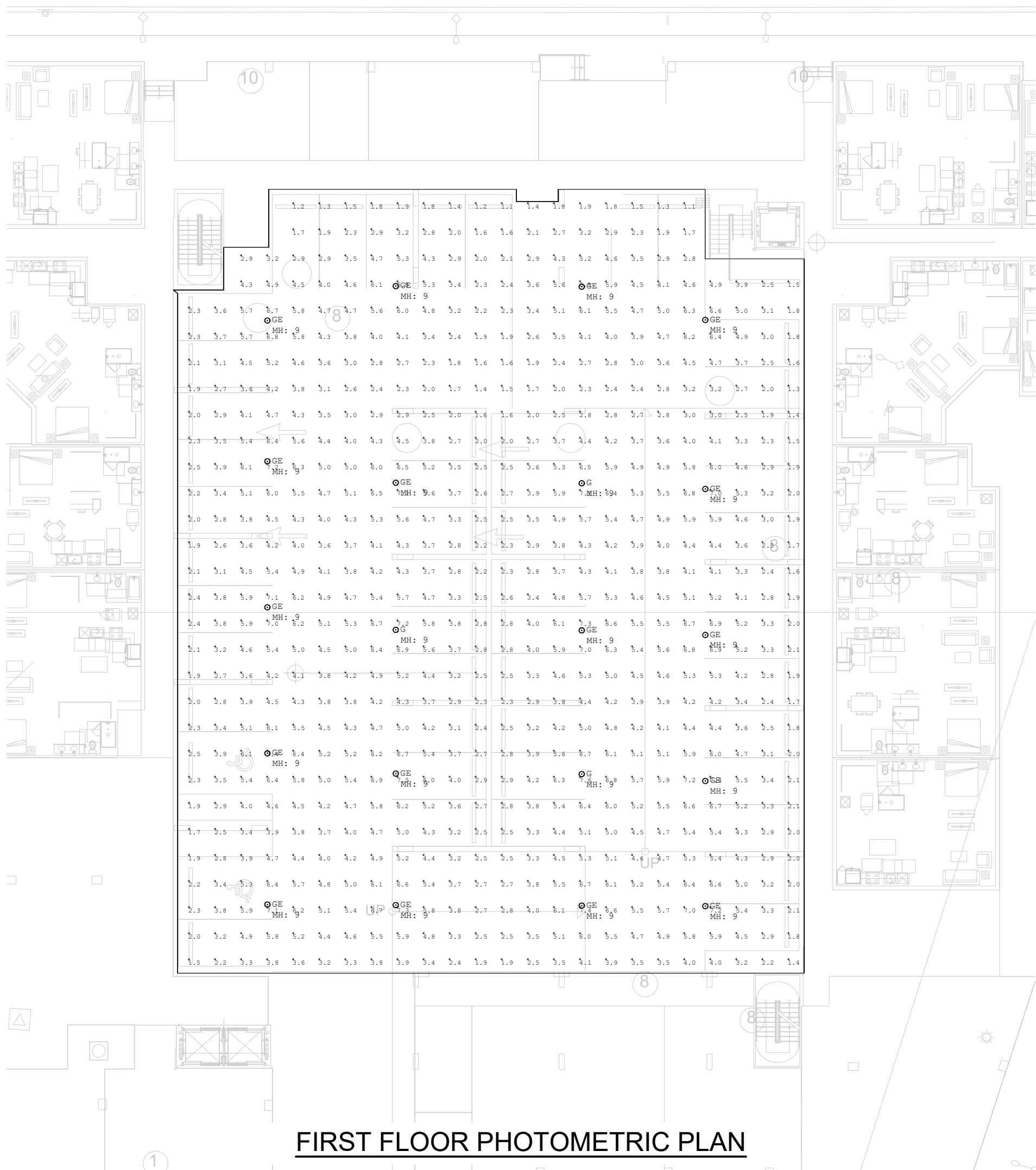


Plotted By: Fernandez, Giovanni Sheet Set: MLLCREEK POMPANO Layout: C-601 GARAGE PHOTOMETRICS PLAN November 21, 2025 04:10:21pm K:\FTL_Civil\043 jobs\043175014 Mill Creek Pompano\Design\CADD\PlanSheets\C-PHOTO_GARAGE.dwg
This document, together with the concepts and designs presented herein, is an instrument of service, as an instrument of service, is intended only for the specific purpose and client for which it was prepared. Reuse of and improper reliance on this document without written authorization and adaptation by Kimley-Horn and Associates, Inc. shall be without liability to Kimley-Horn and Associates, Inc.

Calculation Summary						
Label	CalcType	Units	Avg	Max	Min	Avg/Min
Parking Garage Floor	Illuminance	FC	4.02	7.6	1.1	3.65

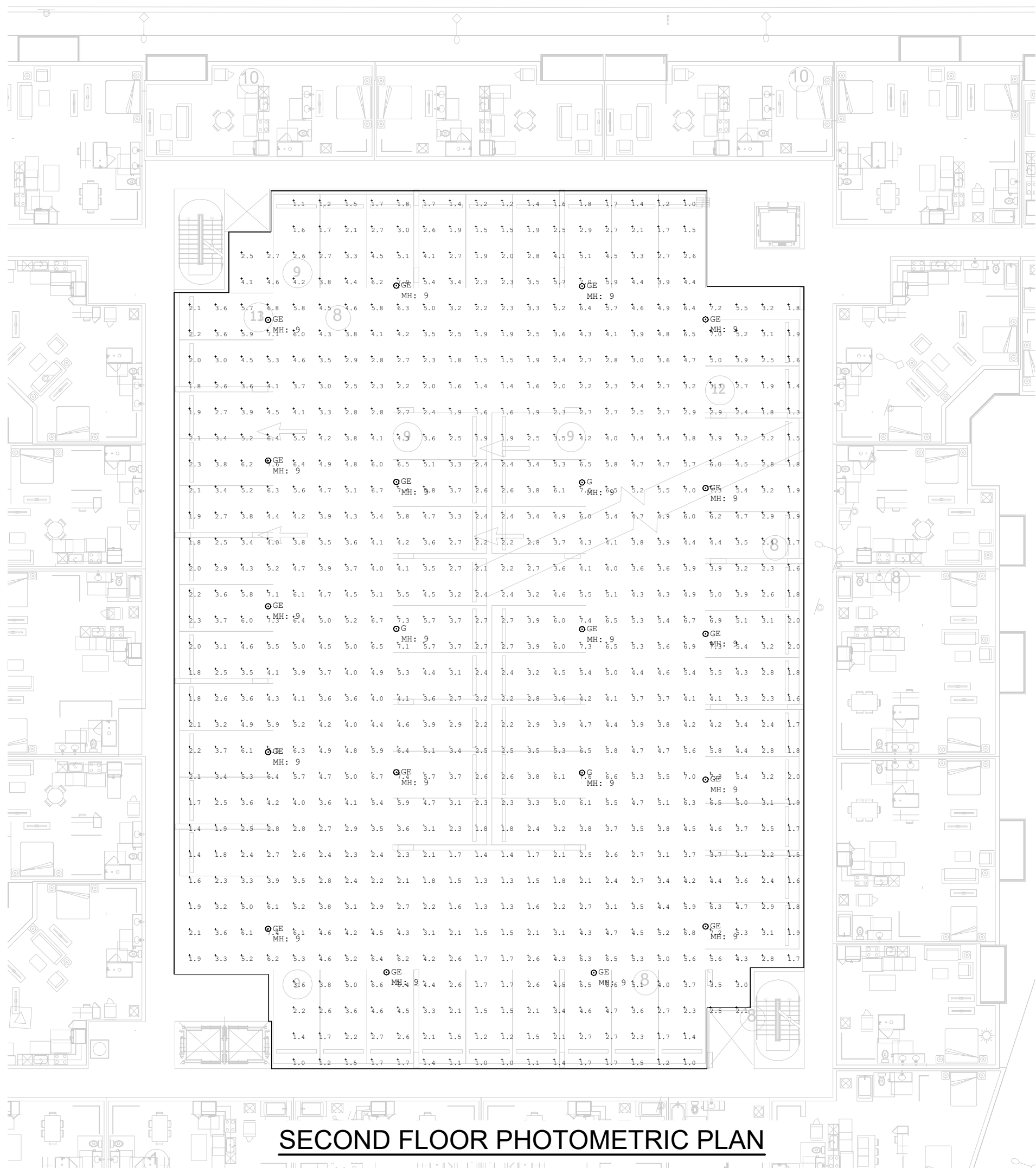
Luminaire Schedule							
Symbol	Qty	Label	Arrangement	Description	LLF	Luminaire Lumens	Luminaire Watts
○	3	G	Single	VersaLED GL9-M8-11-QT-MC7-34-OCT-OC8	0.900	3600	22
○	17	OE	Single	VersaLED GL9-M8-11-QT-MC7-34-OCT-EM-OC8	0.900	3600	22



FIRST FLOOR PHOTOMETRIC PLAN

Calculation Summary						
Label	CalcType	Units	Avg	Max	Min	Avg/Min
Parking Garage Floor	Illuminance	FC	3.65	7.6	1.0	3.65

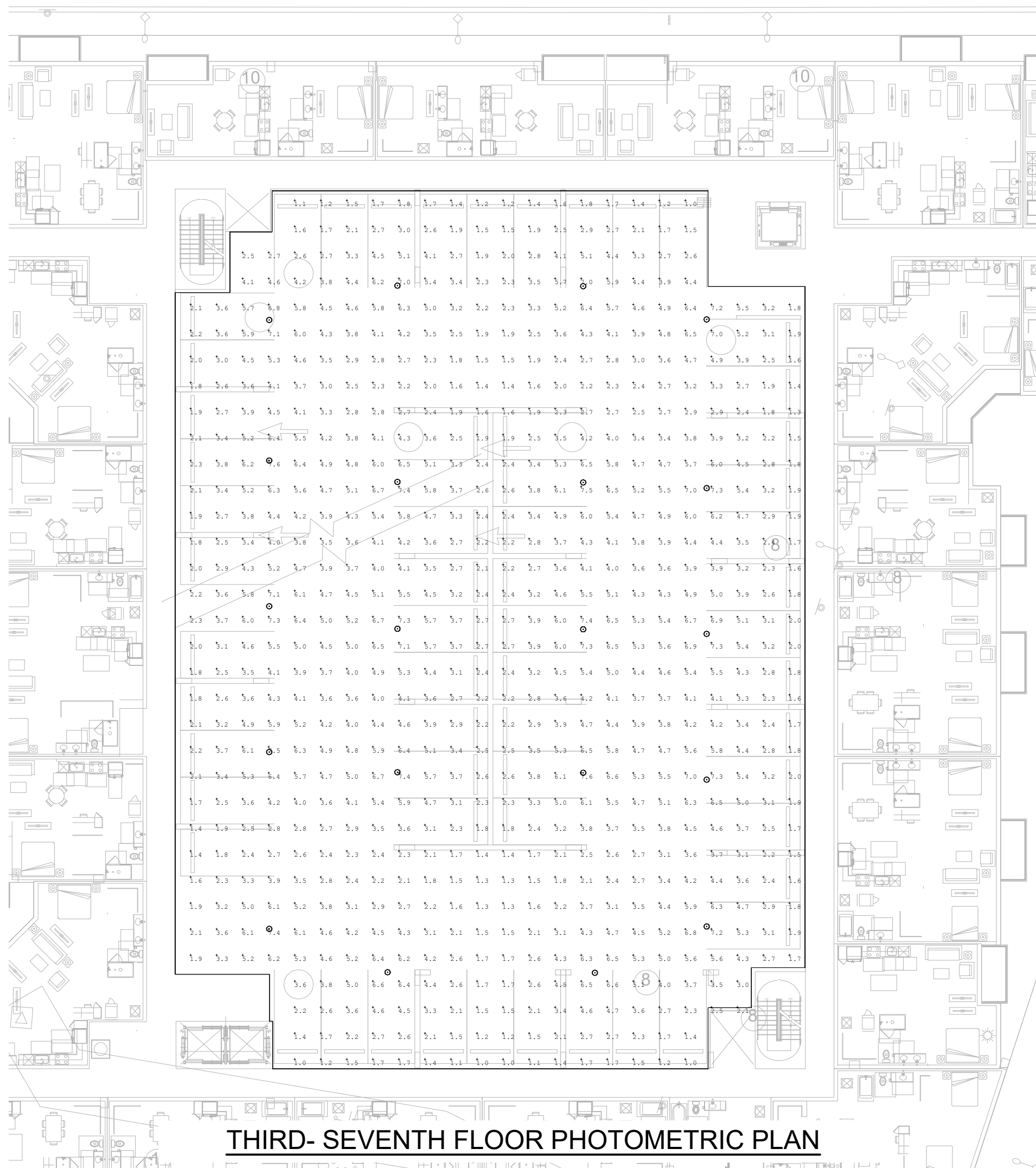
Luminaire Schedule							
Symbol	Qty	Label	Arrangement	Description	LLF	Luminaire Lumens	Luminaire Watts
○	17	OE	Single	VersaLED GL9-M8-11-QT-MC7-34-OCT-EM-OC8	0.900	3600	22
○	3	G	Single	VersaLED GL9-M8-11-QT-MC7-34-OCT-OC8	0.900	3600	22



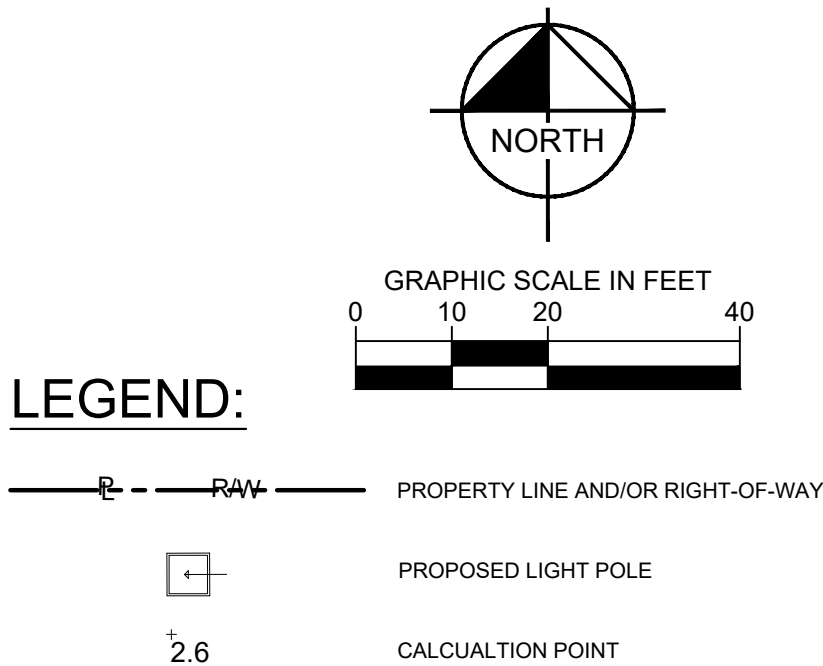
SECOND FLOOR PHOTOMETRIC PLAN

Calculation Summary						
Label	CalcType	Units	Avg	Max	Min	Avg/Min
Parking Garage Floor	Illuminance	FC	3.65	7.6	1.0	3.65

Luminaire Schedule							
Symbol	Qty	Label	Arrangement	Description	LLF	Luminaire Lumens	Luminaire Watts
○	3	G	Single	VersaLED GL9-M8-11-QT-MC7-34-OCT-OC8	0.900	3600	22
○	17	OE	Single	VersaLED GL9-M8-11-QT-MC7-34-OCT-EM-OC8	0.900	3600	22



THIRD- SEVENTH FLOOR PHOTOMETRIC PLAN



LIGHTING NOTES:

- ALL WORK AND MATERIALS SHALL COMPLY WITH ALL CITY/COUNTY/STATE REGULATION AND CODES.
- CALCULATED VALUES ARE DERIVED THROUGH A COMPUTER BASED MODEL WITH LIGHT FIXTURE DATA AS SUPPLIED BY MANUFACTURER THROUGH IES FILES.
- ANY DEVIATION FROM SPECIFIED FIXTURE MODELS AND MOUNTING HEIGHTS IN THIS EXHIBIT WILL DISCOUNT THE VALIDITY OF THESE CALCULATIONS.
- THE PHOTOMETRIC ANALYSIS EXCLUDES ALL PROPOSED OFF-SITE STREET LIGHTING, PROPOSED LANDSCAPE LIGHTING, AND EXISTING OFF-SITE LIGHTING.
- ALL LUMINAIRE SYMBOLS ARE DIAGRAMMATIC ONLY. CONTRACTOR TO FIELD COORDINATE EXACT LOCATIONS AND SETBACKS AGAINST UNDERGROUND UTILITY AND OTHER OBSTRUCTIONS.
- CONTRACTOR TO FIELD VERIFY FIXTURE VOLTAGE AND FINISH WITH OWNER AND ARCHITECT PRIOR TO PURCHASE AND INSTALLATION.
- LIGHT FIXTURES SHALL BE FULLY INTEGRATED WITH INTERIOR LIGHTING SYSTEM. PROVIDE FULLY COMPATIBLE SYSTEM THAT INCLUDES TIMECLOCK OPERATION, INTEGRAL OCCUPANCY SENSING, REMOTE ACCESS AND CONTROL FOR ADJUSTMENT OF HIGH/LOW TRIMMING, ZONING, ETC.
- CONTRACTOR SHALL ENSURE PROPER EROSION CONTROL IS IN PLACE PRIOR TO DEMOLITION.

DRC

PZ25-12000028
01/07/2026

REVISIONS		DATE	BY
No.			

Kimley»Horn

© 2025 KIMLEY-HORN AND ASSOCIATES, INC.
8201 PETERS ROAD, SUITE 2200, PLANTATION, FL 33324
PHONE: 954-555-5100 FAX: 954-793-9247
WWW.KIMLEY-HORN.COM REGISTRY NO. 35106

FLORIDA PROFESSIONAL ENGINEER

No 97495

DATE 11/01/2025

KHA PROJECT	043175014
DATE	11/02/2025
SCALE	AS SHOWN
DESIGNED BY	GVF
DRAWN BY	EA
CHECKED BY	GVF

GARAGE
PHOTOMETRICS
PLAN

MODERA POMPANO
BEACH
PREPARED FOR
MCRT INVESTMENTS LLC
POMPANO BEACH
FLORIDA

SHEET NUMBER
C-601